



Installing and Licensing SHOWCASE®

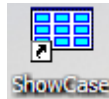
Overview

Downloading and installing ShowCase is a simple operation. You will need to have Administrator privileges on your computer and access to the internet. If an older version of ShowCase has already been installed on this computer, you will need to uninstall that first. If you do need to uninstall an older version, don't worry: all of your settings and your software license will remain, so you don't need to save or write down anything.

Installation

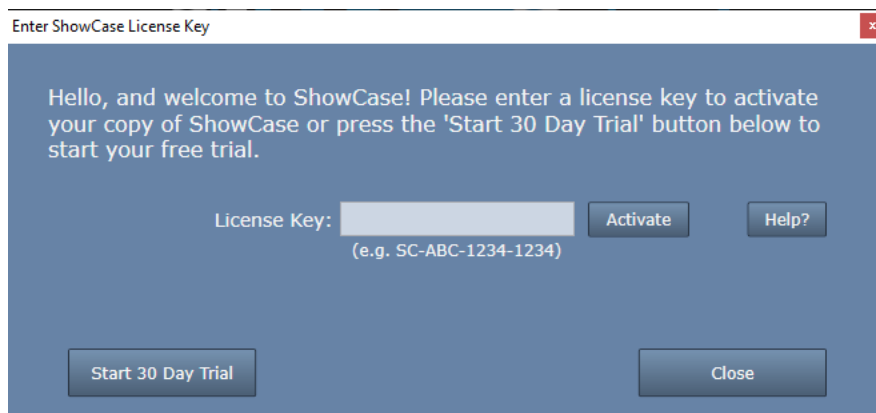
1. Download the latest ShowCase installer from <http://www.triltech.com/download.html>
2. Run the ShowCaseInstaller_6.x.x.exe installer by double-clicking the file or running it from your browser download area.
3. Answer the dialogs that appear on the screen.

Once ShowCase is installed, you should be able to run it from your Start menu or from the icon on your desktop that looks like this:



Licensing

When ShowCase is started for the first time, it will display the following dialog:



To license your copy of ShowCase, enter your License Key into the text area and click the **Activate** button. A few messages will appear about contacting the license server and then ShowCase should start.

Troubleshooting

Invalid License Key

If you got a message saying your license key is invalid, check your license key email to make sure you've entered the correct key. ShowCase license keys are of the form "SC-XXX-nnnn-nnnn" where XXX are upper case letters and nnnn are numbers. ShowCase license keys always start with the letters "SC". If you can't find your email or think the key you're trying to use is valid, contact support@triltech.com for help.

Not Connected to The Internet

If your computer is not connected to the internet, please connect it to the internet and try again. If this is not possible, see the Manual Licensing section in the ShowCase Licensing guide found at <http://www.triltech.com/documents.html>.

Unable to Connect to The Trillium License Server

If your computer cannot reach the Trillium License Server (www.triltechsupport.com) due to site blocking by your IT group or other firewall issues, contact them and have them allow [triltechsupport.com](http://www.triltechsupport.com) through your blocking software. If that is not possible, see the Manual Licensing section in the ShowCase Licensing guide found at <http://www.triltech.com/documents.html>.

30 Day Free Trial

To use the 30 day free trial, press the **Start 30 Day Trial** button. A screen will appear asking whether you want to try Basic, Premier, or Workstation. Select which you would like to try out.

Trial licenses can only be used once on a given computer. They cannot be renewed or reset. If you are running a trial license but it expires and need more time to evaluate the software, please contact support@triltech.com to request a temporary license.

Further Information on Licensing

For more information on licensing, e.g. how to transfer licenses between computers or share licenses between computers, see the ShowCase Licensing guide and/or the Workstation Licensing Guide you will find at <http://www.triltech.com/documents.html>.

SHOWCASE® is a registered trademark of Trillium Technology, Inc.